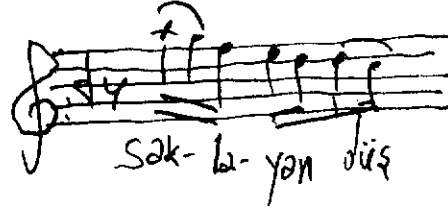
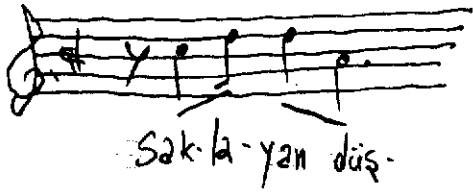


Udi Marko Golatopler

Handwritten musical notation on a single staff, featuring a treble clef and a key signature of one sharp (F#). The melody consists of several measures of music, including eighth and sixteenth notes, and rests. The lyrics "i-gin i-gin in-la yip" are written below the staff, corresponding to the notes. The notation is written in a cursive, handwritten style.

✕



Lüfte

Gurubun ateşle yanan zindüsti aksam
Ve kollar fibi bitap sulara düştü aksam
O ünkek bakışlarla içim içim inleyip
Vuslatı tüllerle saklayan düştü aksam